



# Supplying the enemy? North-European suppliers of timber in Seville from 1580 to 1598

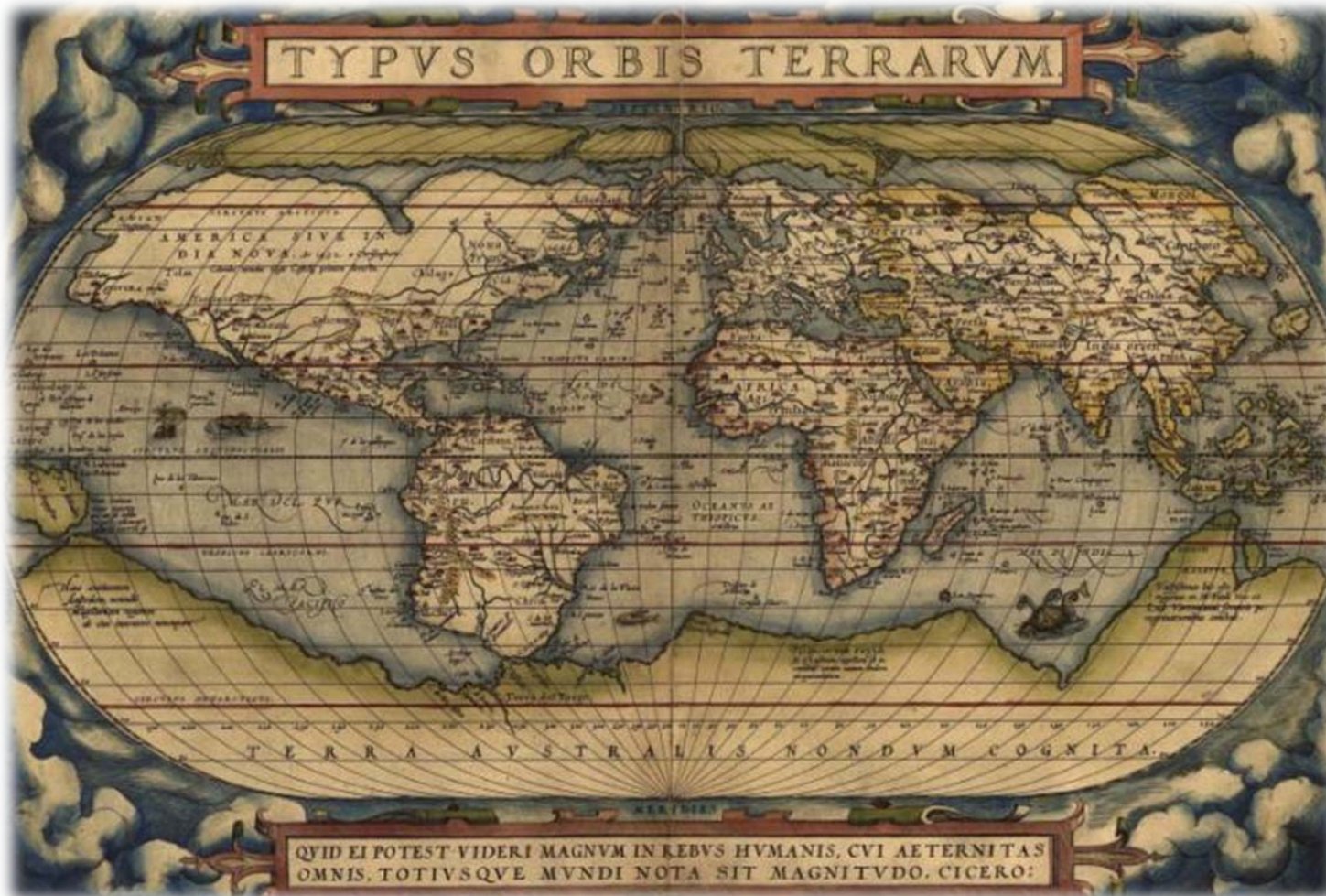


*Vista de Sevilla ca. 1580, Alfonso Sanchez Coelho*

# Table of contents

1. Research question and hypothesis
2. A work-in-progress database
3. Chapters of the dissertation:
  - Timber merchants in Seville
  - Routes and ports of European timber trade
  - A Flemish oligopoly in Andalusia
  - The *Flemish nation* in Seville

- › How did North-European commercial networks supply timber for the Spanish seaborne empire?



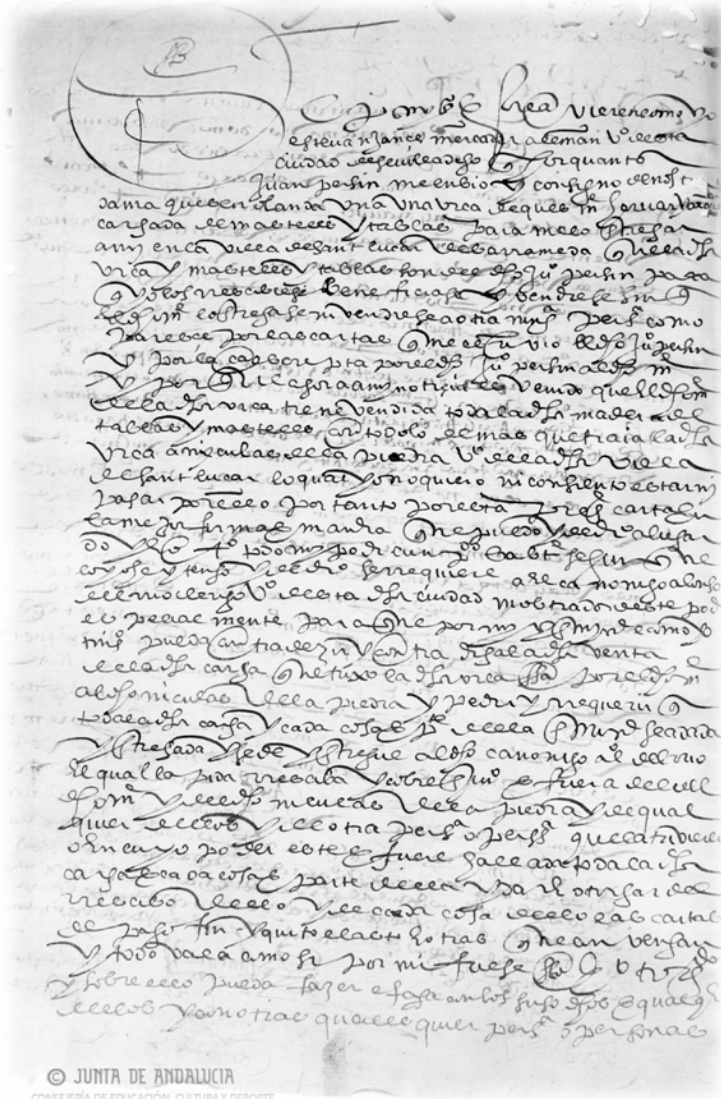
*Theatrum Orbis Terrarum*,  
1570. Abraham Ortelius

- › How did North-European commercial networks supply timber for the Spanish seaborne empire?



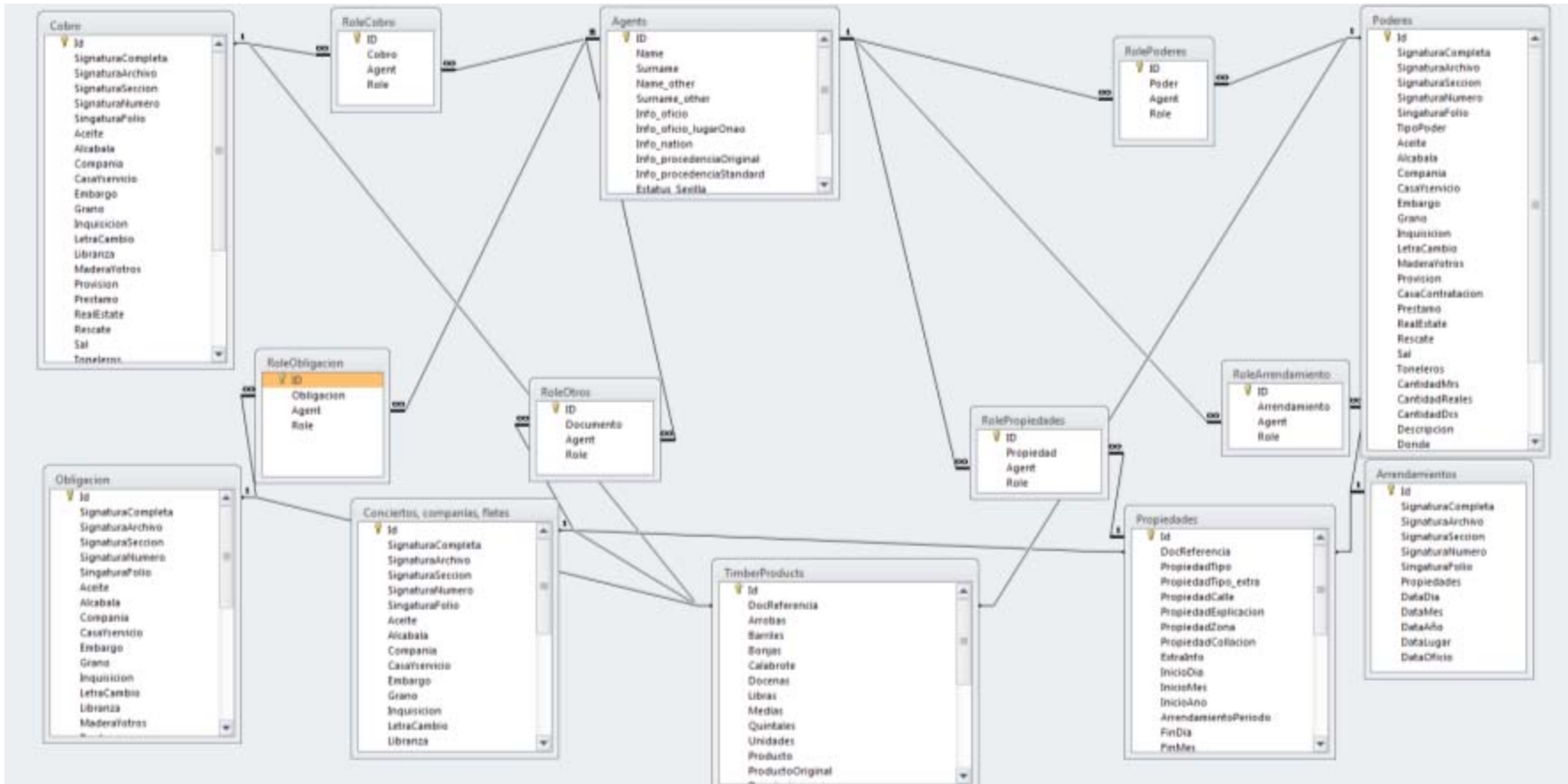
*Theatrum Orbis Terrarum*,  
170. Abraham Ortelius

# A work-in-progress database

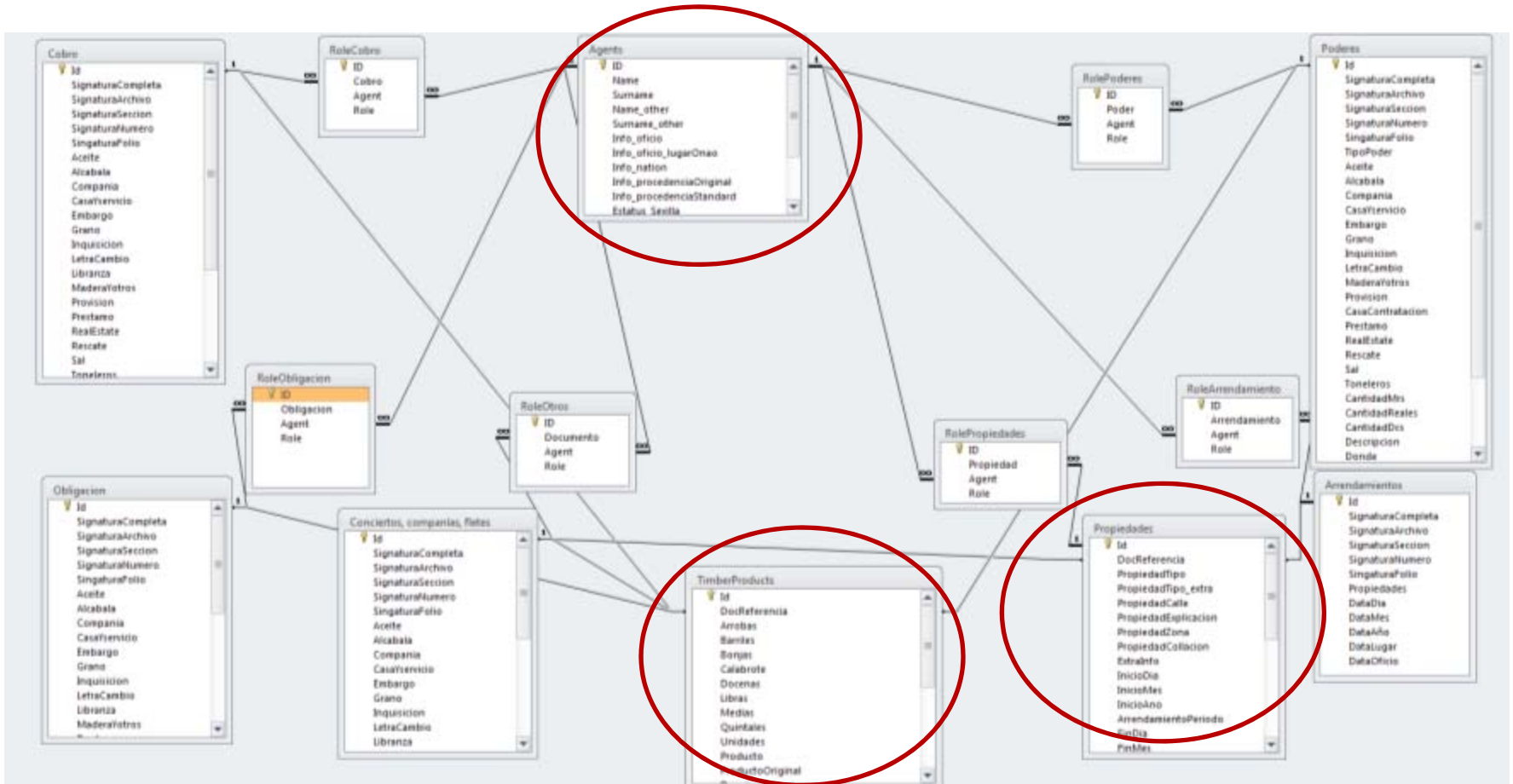


- > Focus on three merchants:
  - Francisco Bernal
  - Esteban Jansen
  - Jaques Nicolas
- + their relatives and colleagues.
- > From 1580 to 1598
  - Dutch Republic, Iberian Union
- > Notarial documents from Seville  
 Provincial Archive

# A work-in-progress database



# A work-in-progress database







# A work-in-progress database

Complemented with:

- Sound Toll Registers + Amsterdam City Archives databases
- Archivo General de Simancas, Archivo General de Indias, Archivo Ducal de Medina Sidonia



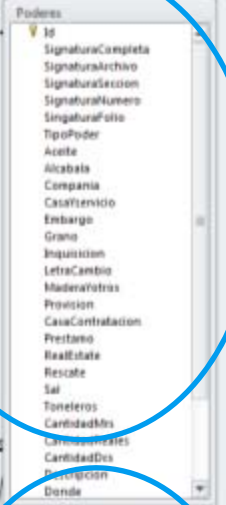
Cobro

- Id
- SignaturaCompleta
- SignaturaArchivo
- SignaturaSeccion
- SignaturaNumero
- SignaturaFolio
- Acete
- Alcabala
- Compania
- CasaServicio
- Embargo
- Grano
- Inquisicion
- LetraCambio
- Libranza
- MaderaTotras
- Provision
- Prestamo
- RealEstate
- Rescate
- Sal
- Toneleros



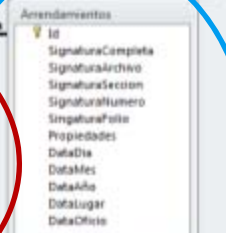
Obligacion

- Id
- SignaturaCompleta
- SignaturaArchivo
- SignaturaSeccion
- SignaturaNumero
- SignaturaFolio
- Acete
- Alcabala
- Compania
- CasaServicio
- Embargo
- Grano
- Inquisicion
- LetraCambio
- Libranza
- MaderaTotras



Poderes

- Id
- SignaturaCompleta
- SignaturaArchivo
- SignaturaSeccion
- SignaturaNumero
- SignaturaFolio
- TipoPoder
- Acete
- Alcabala
- Compania
- CasaServicio
- Embargo
- Grano
- Inquisicion
- LetraCambio
- MaderaTotras
- Provision
- CasaContratacion
- Prestamo
- RealEstate
- Rescate
- Sal
- Toneleros
- CanidadesMts
- CanidadesDes
- Canidades
- Dereccion
- Denda



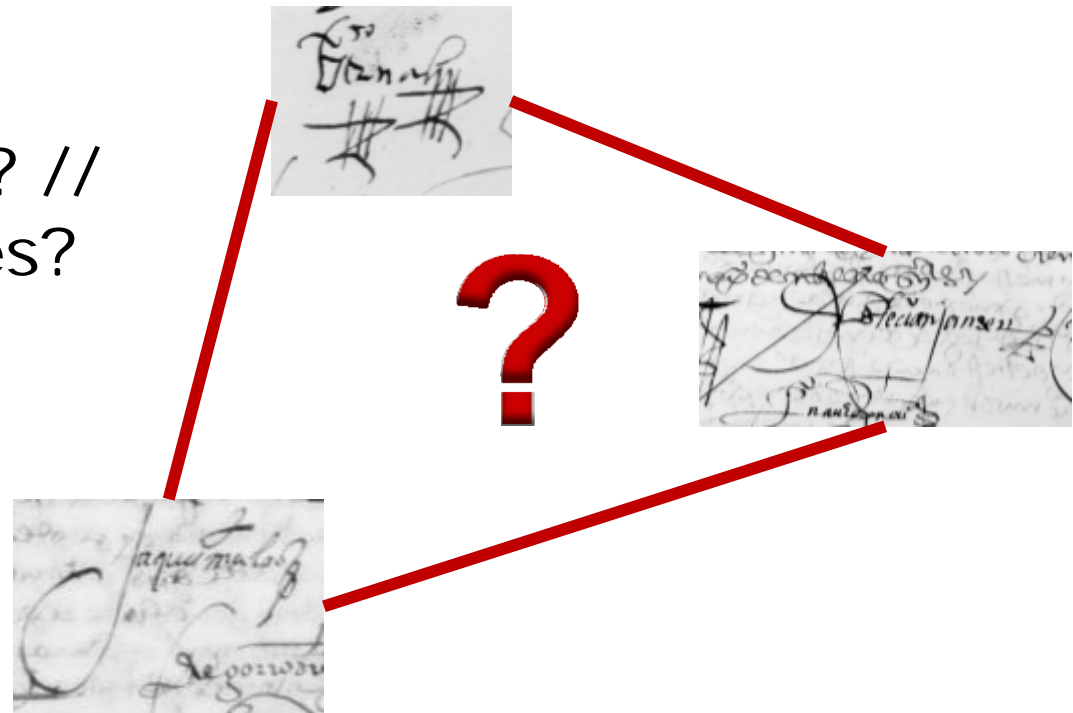
Arrendamientos

- Id
- SignaturaCompleta
- SignaturaArchivo
- SignaturaSeccion
- SignaturaNumero
- SignaturaFolio
- Propiedades
- DataDia
- DataMes
- DataAño
- DataLugar
- DataOficio

# Timber merchants in Seville

› Family networks

› Shared network? //  
Shared strategies?



# Routes and ports

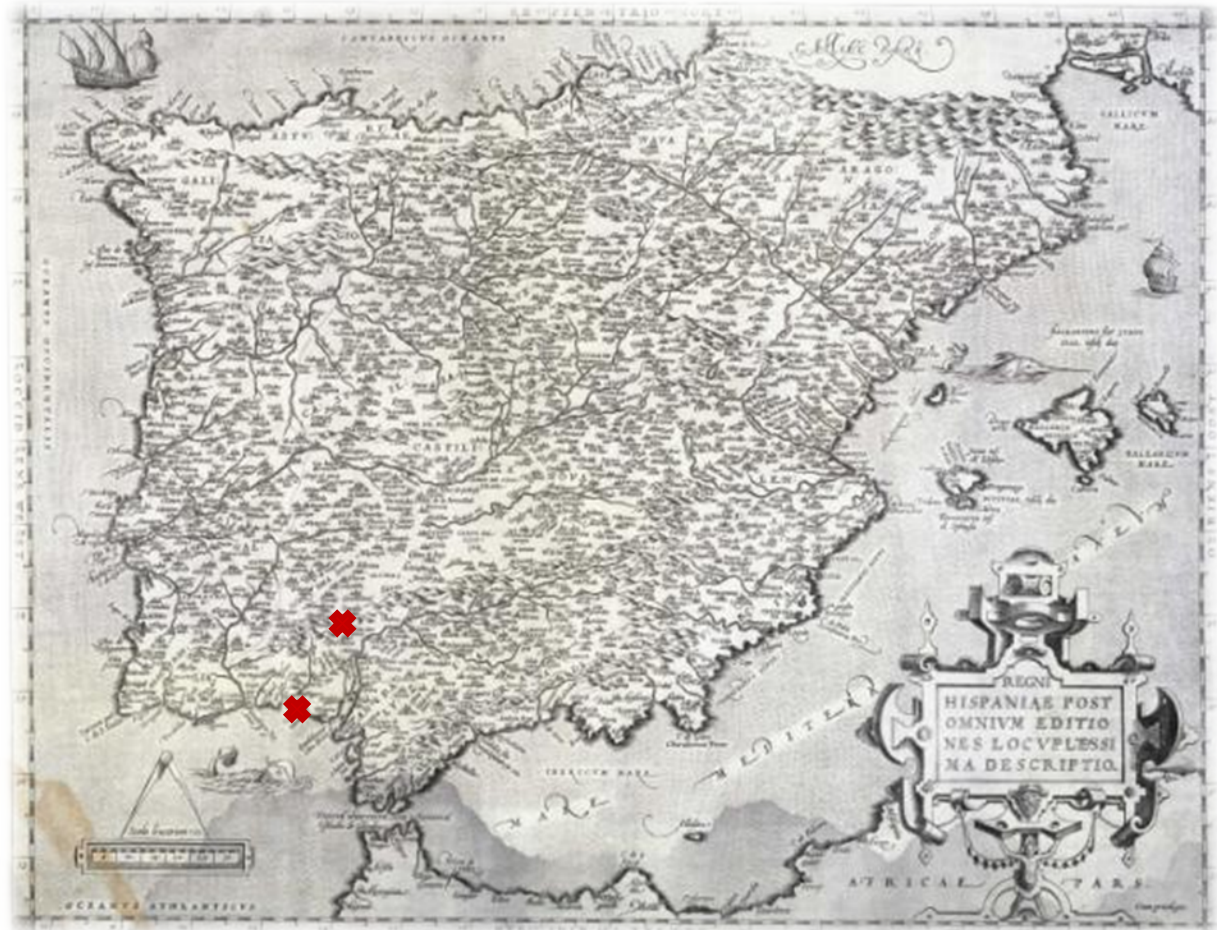
- › European network
- › Network vs prohibitions
- › Mediterranean Sea  
– Baltic Sea



*Theatrum Orbis Terrarum*, 1700. Abraham Ortelius

# A Flemish oligopoly

- › Duke of Medina Sidonia vs *Consulado de Indias*



*Theatrum Orbis Terrarum*, 1570. Abraham Ortelius

# The *Flemish* nation



Alonso Pérez de Guzmán , 7<sup>th</sup> Duke of Medina Sidonia,  
Unknown ca. 1590

“Son los mercaderes más ricos  
y abonados de aquella nación  
que residen allí”

Duke of Medina Sidonia, 1589

# The *Flemish* nation



- › Origins of the nation:
  - Antwerp?
  - Amsterdam?
  - Hansa?
  
- › Social promotion of Bernal, Jansen and Nicolas
  
- › *Hermanidad de San Andrés de los Flamencos* and *Consulado de flamencos y alemanes* by the end of 16<sup>th</sup> century

“Martyrdom of Saint Andrew”, Juan de Roelas for the Flemish chapel in Seville, 1610.



university of  
 groningen

faculty of arts

germán jiménez montes

# Thank you for your attention



*Vista de Sevilla ca. 1580, Alfonso Sanchez Coelho*